



**AIB Group**  
Sourcing, Property & Security

2 Heuston South Quarter,  
St. John's Road,  
Dublin 8  
D08 A9RT  
Ireland

Telephone: +353 1 660 0311

The Secretary  
An Bord Pleanála  
64 Marlborough Street  
Dublin 1

Date: 25<sup>th</sup> November 2022


**RE: LETTER OF CONSENT FOR INCLUSION OF LANDS WITHIN A PLANNING APPLICATION BY CORNEL LIVING LIMITED FOR DEVELOPMENT OF LANDS AT CORNELSCOURT, DUBLIN 18**

Dear Sir/Madam,

We, Allied Irish Bank, p.l.c. are the owners of lands shown on the drawing attached at Appendix A, such hatched lands falling within the site as outlined in red forming the subject site for the planning application by Cornel Living Limited for a proposed residential development on these lands.

We hereby consent to the inclusion of the lands within our ownership in the planning application for the purpose of traffic management only.

Yours faithfully,

  
Gemma Howard  
For and on behalf of Allied Irish Bank p.l.c.

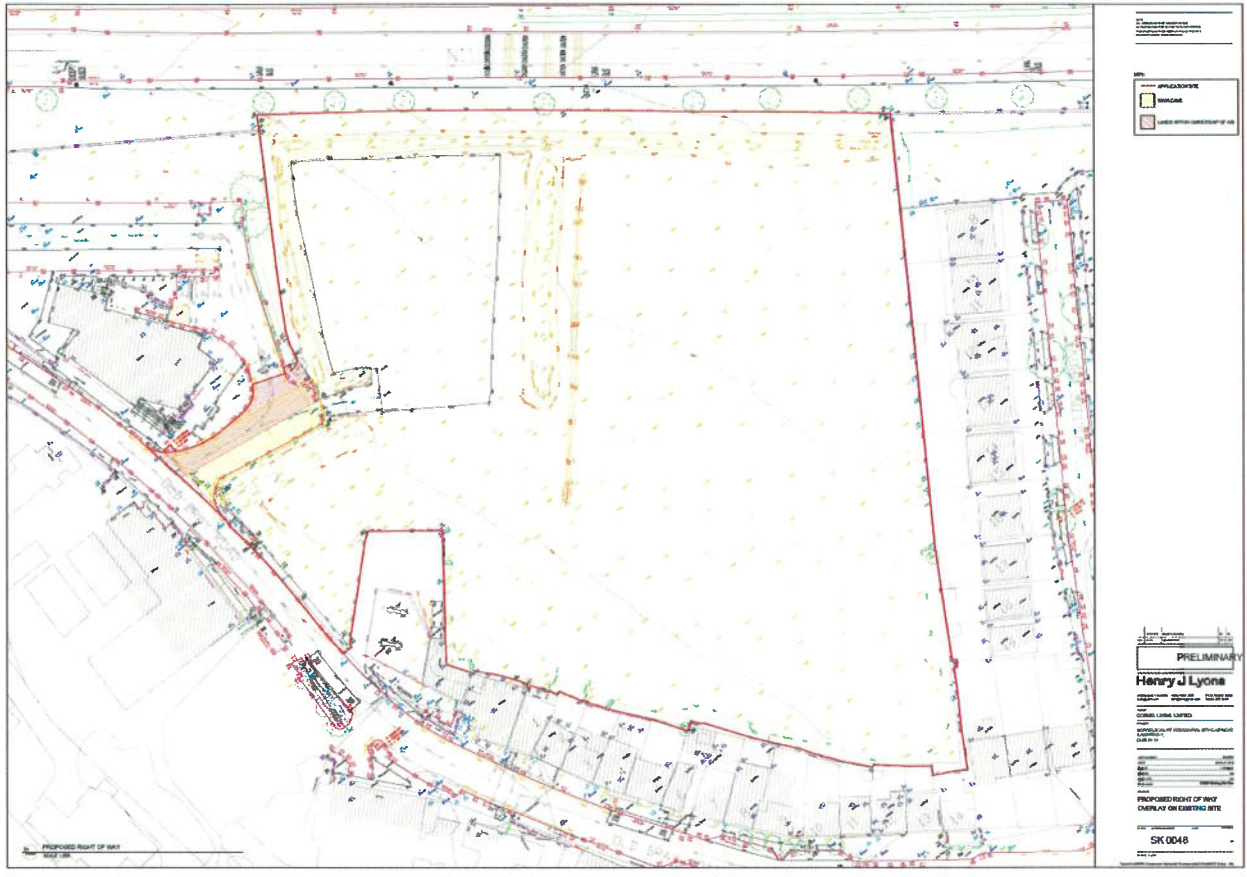


**AIB Group**  
**Sourcing, Property & Security**

2 Heuston South Quarter,  
St. John's Road,  
Dublin 8  
D08 A9RT  
Ireland

Telephone: +353 1 660 0311

## APPENDIX A



**An Rannóg Bonneagair agus Athraithe Aeráide**  
**Infrastructure and Climate Change Department**

**Property Management Section**  
**Robert Burns**  
**Director**

Level 3, County Hall, Dun Laoghaire, Co. Dublin  
Direct Tel: 01 2054806

2<sup>nd</sup> December 2021

Ms. Jean Strong  
Declan Brassil Chartered Planning Consultants  
Lincoln House,  
Phoenix Street  
Smithfield  
Dublin 7  
D07 Y75P

**Subject to Contract – Contract Denied**

Re: Cycle connection point from the proposed SHD across council owned and 'taken in charge' land at Cornelscourt Village, Old Bray Road, Cabinteely to the adjoining N11

**Inclusion of Council Lands**

Dear Ms. Strong,

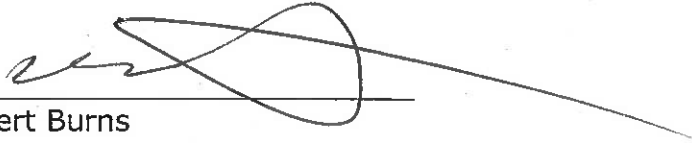
I wish to advise that Dún Laoghaire-Rathdown County Council consents to the inclusion of lands, both 'taken in charge' and in Council ownership, highlighted in blue on Drawing No. P 0001, Revision B, for a cycle connection point from the proposed SHD at Cornelscourt Village, Old Bray Road, Cabinteely, Dublin 18, to the adjoining N11, subject to the following conditions:-

1. Transportation Planning/Roads Maintenance Section requires further consultation on the extent of the works as part of the planning process.
2. It should be noted that the N11 is a National road and while it is maintained by Dun Laoghaire-Rathdown County Council it is part of the National Road Network and Transport Infrastructure Ireland are the funding authority for the maintenance of National roads. Consent should also be obtained from TII for the proposed works.
3. If planning permission is granted, an agreement for the disposal of any Council owned lands will have to be reached. Any disposal will require a resolution of the full Council under Section 183 of the Local Government Act, 2001.

This consent is "Without Prejudice" and does not form a contract or discussions leading to a contract in respect of Council property. This letter should not be construed as binding the Council in any way whether to take any further action, partake in any future discussions or negotiations whether legally, contractual or otherwise, whether as landowner or otherwise.

This consent also applies to this one specific planning application only which should be made within twenty-eight days of the date of this letter.

Yours sincerely



Robert Burns  
Director

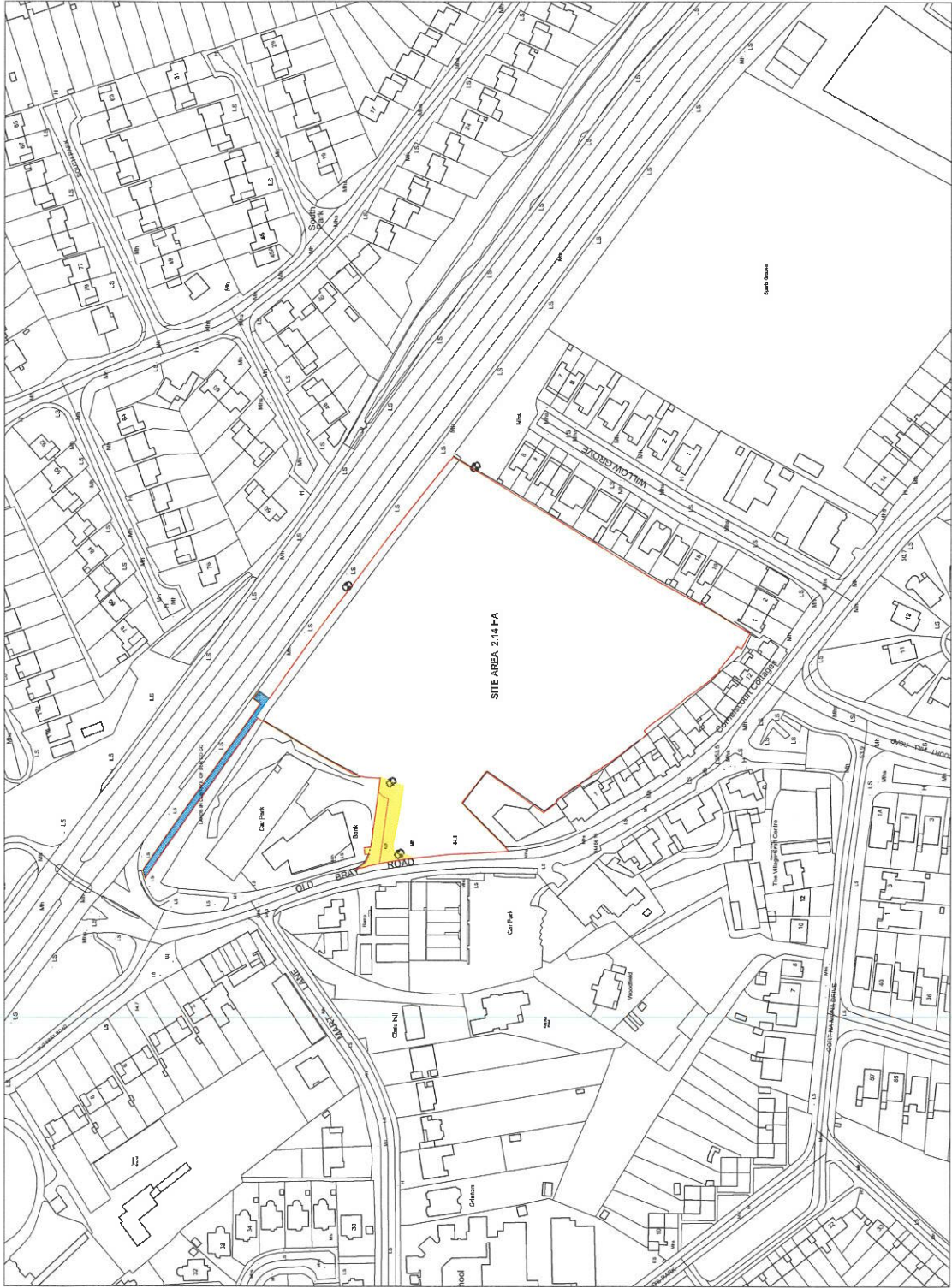


NOTE:  
 THIS DRAWING IS TO BE USED IN CONJUNCTION WITH THE DRAWINGS TO BE CALLED FROM THE DRAWINGS LISTED AT THE BOTTOM OF THIS DRAWING.

**KEY:**

- Site boundary subject to planning application
- Location of Site Notice
- Hydrology
- Landmarks Subject to Consent

- 1. The site boundary is shown in red.
- 2. The site boundary is shown in blue.
- 3. The site boundary is shown in yellow.
- 4. The site boundary is shown in green.
- 5. The site boundary is shown in orange.
- 6. The site boundary is shown in purple.
- 7. The site boundary is shown in pink.
- 8. The site boundary is shown in light blue.
- 9. The site boundary is shown in light green.
- 10. The site boundary is shown in light orange.
- 11. The site boundary is shown in light purple.
- 12. The site boundary is shown in light pink.
- 13. The site boundary is shown in light light blue.
- 14. The site boundary is shown in light light green.
- 15. The site boundary is shown in light light orange.
- 16. The site boundary is shown in light light purple.
- 17. The site boundary is shown in light light pink.
- 18. The site boundary is shown in light light light blue.
- 19. The site boundary is shown in light light light green.
- 20. The site boundary is shown in light light light orange.
- 21. The site boundary is shown in light light light purple.
- 22. The site boundary is shown in light light light pink.
- 23. The site boundary is shown in light light light light blue.
- 24. The site boundary is shown in light light light light green.
- 25. The site boundary is shown in light light light light orange.
- 26. The site boundary is shown in light light light light purple.
- 27. The site boundary is shown in light light light light pink.
- 28. The site boundary is shown in light light light light light blue.
- 29. The site boundary is shown in light light light light light green.
- 30. The site boundary is shown in light light light light light orange.
- 31. The site boundary is shown in light light light light light purple.
- 32. The site boundary is shown in light light light light light pink.
- 33. The site boundary is shown in light light light light light light blue.
- 34. The site boundary is shown in light light light light light light green.
- 35. The site boundary is shown in light light light light light light orange.
- 36. The site boundary is shown in light light light light light light purple.
- 37. The site boundary is shown in light light light light light light pink.
- 38. The site boundary is shown in light light light light light light light blue.
- 39. The site boundary is shown in light light light light light light light green.
- 40. The site boundary is shown in light light light light light light light orange.
- 41. The site boundary is shown in light light light light light light light purple.
- 42. The site boundary is shown in light light light light light light light pink.
- 43. The site boundary is shown in light light light light light light light light blue.
- 44. The site boundary is shown in light light light light light light light light green.
- 45. The site boundary is shown in light light light light light light light light orange.
- 46. The site boundary is shown in light light light light light light light light purple.
- 47. The site boundary is shown in light light light light light light light light pink.
- 48. The site boundary is shown in light light light light light light light light light blue.
- 49. The site boundary is shown in light light light light light light light light light green.
- 50. The site boundary is shown in light light light light light light light light light orange.



**41**  
 P001 SITE LOCATION PLAN  
 SCALE 1:1000

**PRELIMINARY**

**Henry J Lyons**

Address: 11, Upper Mount Street, Dublin 2  
 Tel: 01 274 6622  
 Email: henry@hjl.com

**CORNEL LIVING LIMITED**  
 PROJECT: THE VILLAGES AT THE VILLAGES CENTRE, DUBLIN 2.  
 DRAWING NO: P-0001

JOB NUMBER:	P-0001
DATE:	NOVEMBER 2019
SCALE:	1:1000 (A1)
DRAWN BY:	EA
CHECKED BY:	EA
FILE NAME:	P-0001 Proposed Site Location Plan

**SITE LOCATION PLAN -  
 CONSENT REQUEST**

BLOCK:	DRAWING NUMBER:	DATE:	REVISION:
	<b>P 0001</b>		<b>B</b>